

**INSIDE THIS ISSUE:**

- Model T Ford Club Visits Cambridge City
- RAIN Ride Crosses Indiana
- Featured Property



**SPECIAL DATES OF INTEREST:**

- Saturdays, June 1-Sept. 28: Huddleston Farmers' Market (An Indiana Landmarks program)
- August 4: Oliver P. Morton Birthday Celebration. Centerville. HNR Panel Dedication.

An E-publication of:  
**INDIANA NATIONAL ROAD ASSOCIATION**  
*Preserve, protect and promote*  
 PO Box 284  
 Cambridge City, Indiana 47327

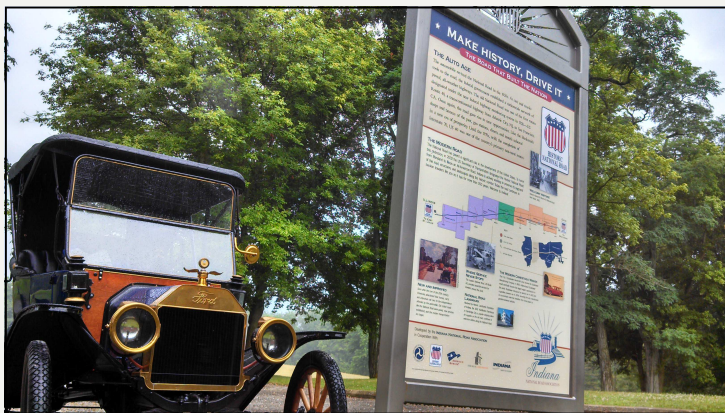
# Roadwork

**MAKE HISTORY, DRIVE IT.**

23 July 2013

Volume 16, Issue 7

## MODEL T FORD'S VISIT CAMBRIDGE CITY & HUDDLESTON FARMHOUSE



*Left: Model T Ford parked near INRA Historic National Road interpretive panel during a Club visit to the Huddleston Farmhouse earlier this week.*

The Model T Ford has a special significance to the history of the Historic National Road during the early 20th Century. The Model T made owning an automobile affordable to the average family. As automobile traffic increased and developed the Federal Government saw the need to reorganize the nation's highways. In 1926, the National Road was designated US 40 and became part of a much longer route that spanned the nation. Today, the National Road is still designated US 40 and "40" is a common term in the vernacular of the folks who live along the Historic National Road.

There are countless Model T and vintage car clubs around the country. Each dedicated to particular models and styles of automobiles.

For more information about the Indy 500 Chapter of the Model T Ford Club of America contact, Tony Wiltshire at:

[treasurer@indy500modelt.com](mailto:treasurer@indy500modelt.com)

**Cambridge City**—On July 22, The Model T Ford Club of America—Indy 500 Chapter made a visit to Cambridge City and the Huddleston Farmhouse. The Club was in the Cambridge City area to attend the Hagerstown Vintage Plane Fly-in. They enjoyed lunch at the Pour House, visited the shops in town, and toured the Huddleston Farmhouse.

The Indy 500 Chapter of the Model T Ford Club of America was formed in October of 1980 in Central Indiana. The Club started small but has grown and is now just over

100 member families. The majority of members are from Indiana and the surrounding states of Illinois, Ohio and Kentucky, but the Club also has member from across the country.

The Club members like to drive their cars on tours rather than attend shows. They tour Indiana and Illinois during the warm months and hold monthly meeting during the colder months. Tours range from 50 miles to 150 miles per day. The Club also holds Model T workshops throughout the year.

## RAIN RIDE CROSSES INDIANA

**Statewide**—On July 13, RAIN (Ride across Indiana) crossed the State via the Historic National Road. This year's event marked the 27th RAIN event. The ride covered 160 miles. With the exception of Indianapolis, the event followed US 40/Historic National Road.

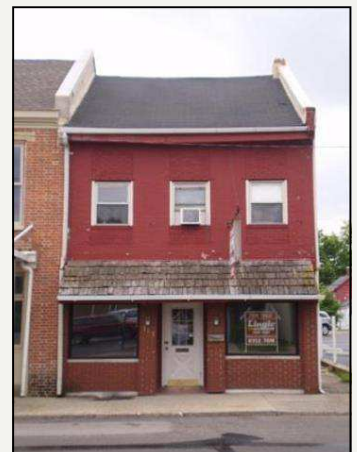


In Terre haute, the evening before the event, Joe Frost, our Executive Director, presented to RAIN riders about INRA.

For more information visit: [bloomingtonbicycleclub.org](http://bloomingtonbicycleclub.org)

## OWN A PIECE OF NATIONAL ROAD HISTORY

**113 E. Main Street, Centerville**  
 Built: listed as 1900, possibly earlier  
 Commercial  
 Size: 1,740 square feet  
 Style: Federal  
 MLS# 10019838  
 List price: \$99,900  
 Contact: Kyle Tom  
 Lingle Real Estate  
 765-598-5168



Become a member or donate today!

Name \_\_\_\_\_  
 Address \_\_\_\_\_  
 City \_\_\_\_\_  
 State \_\_\_\_\_ Zip \_\_\_\_\_  
 Phone(\_\_\_\_) \_\_\_\_\_  
 Email \_\_\_\_\_

- Traveler (Individual) \$25.00
- Movers (Family) \$35.00
- Veteran Journeyman \$50.00
- Drover (Business) \$100.00
- Toll House Keeper \$250.00
- King of the Road \$500.00
- Life Member \$1,000.00

(make check payable to INRA)

Indiana National Road Association  
 PO Box 284  
 Cambridge City, Indiana 47327  
 Phone: 765-478-3173  
 E-mail: [inra@indianalandmarks.org](mailto:inra@indianalandmarks.org)  
 Web: [www.indiananationalroad.org](http://www.indiananationalroad.org)