

**INSIDE THIS ISSUE:**

- Beyond Indiana: The Historic Natl. Rd.
- Pickett's Hardware
- Members Make it Possible!
- Featured Property



**SPECIAL DATES OF INTEREST:**

- Today: **Renew your membership!**
- April 9-11: Preserving Historic Places conference, New Albany.
- May 3: Civil War Spring Drill, Huddleston Farmhouse

An E-publication of:  
**INDIANA NATIONAL ROAD ASSOCIATION**  
*Preserve, protect and promote*  
 PO Box 284  
 Cambridge City, Indiana 47327

# Roadwork

**MAKE HISTORY, DRIVE IT.**

March 31, 2014

Volume 17, Issue 3

## BEYOND INDIANA: THE HISTORIC NATIONAL ROAD

The Historic National Road spans six states. In 1811, construction began in Cumberland, Maryland, and the Road was laid out westward linking east to west. Along the Road new States were born, communities developed, and homes and businesses established. As the Indiana National Road Association we focus on Indiana's 156 mile section of the Road, but the significance of the National Road reaches beyond Indiana. Each of the six states have an organization that represent and promote their section of the Historic National Road.

This is the first installment of a series call *Beyond Indiana*. Over the next several editions of Roadwork we will pull a story from the National Road beyond Indiana. Enjoy this except of an article from Illinois about National Road Association of Illinois' National Road Interpretive Center.

*Vandalia center displays National Road history...*From Effingham Daily News, by Seth Whitehead.

**Vandalia**—It's not east fitting 164 miles of history into a 49-by-24-foot building. But the National Road Interpretive Center in Vandalia has managed to pull off that formidable task.

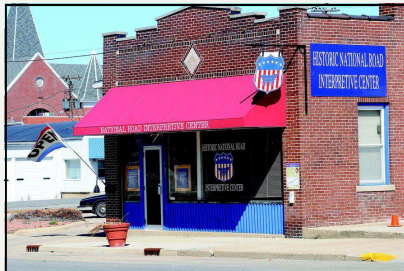
Established in 2009, the most recent addition to

Vandalia's historic downtown area tells the story of the National Road in Illinois through numerous artifacts and interactive displays.

"We've got a lot of stuff in here," said Mary Truitt of the National Road Association of Illinois.

Among the facility's many charms is a \$32,000 interactive map that illustrates the National Road's path through communities, such as Greenup, Teutopolis, Effingham, Altamont and St. Elmo.

For more information on the National Road Association of Illinois and their efforts visit:  
[www.nationalroad.org](http://www.nationalroad.org)



Above: National Road Interpretive Center, Vandalia, Illinois.

## PICKETT'S HARDWARE

*Joe Skvarenina, Hancock County Historian*

**Greenfield**—Do you remember Pickett's Hardware in Greenfield? You could virtually go in the store and find anything you could use or want, Sadly the old store is gone and has been taken over by Main Street Pizza which to their credit has preserved some of the historical ambiance. Charlie White provides us with some interesting facts on Pickett's. The Pickett Hardware Company came into existence in 1912 at 10 West Main Street and occupied that site for its entire history. In fact, 10 West Main had always housed hardware stores, originally Wood, Pratt & Baldwin occupied the building. Then in 1875, the firm became Pratt & Baldwin. Later, Baldwin & Carey, then in turn Baldwin & Son and Thomas & Sons who sold out to Donald and Roy Pickett. In 1916, M.M. Pickett became associated with his two brothers when they bought out the stocks of two stores in Morristown and continued to manage branch stores at the Morristown site. In 1928, they acquired the stock of A.A. Gappen Sporting Goods, current site of Red Ribbons Antiques. Over the years Pickett's inventory included Hoovers Vacuum Cleaners, The Perfection Stove, Nubian Hot Blast Heating, Aladdin lamps, newer electrical appliance like Haag Electric washer, Atwater Kent Radio, and Majestic Refrigerator.

## OWN A PIECE OF NATIONAL ROAD HISTORY

**508 W. Main St., Knightstown**

Built: 1828  
 Size: 3,824 Sq. Ft.  
 Beds: 4  
 Style: Federal/Greek Revival  
 MLS# 21278239  
 List Price: \$144,500  
 Contact: Carpenter Realtors—  
 Greenfield, (317)467-1800



## MEMBERS MAKE IT POSSIBLE!

**Cambridge City**—We are pleased to welcome our members! Without our members our mission could not be accomplished. Members provide funds that translate into success. Have you joined or renewed you membership?

Simply print this newsletter, fill out and select level, and return to the address below. Benefits include this e-letter, invitations to our annual meeting, and discounted rates for our events and programs. Business members receive recognition on our website.

Join today and help  
*Protect, Preserve, and Promote*  
 the Historic National Road.

Become a member or donate today!

Name \_\_\_\_\_  
 Address \_\_\_\_\_  
 City \_\_\_\_\_  
 State \_\_\_\_\_ Zip \_\_\_\_\_  
 Phone(\_\_\_\_) \_\_\_\_\_  
 Email \_\_\_\_\_

- Traveler (Individual) \$25.00
- Movers (Family) \$35.00
- Veteran Journeyman \$50.00
- Drover (Business) \$100.00
- Toll House Keeper \$250.00
- King of the Road \$500.00
- Life Member \$1,000.00

(make check payable to INRA)

Indiana National Road Association  
 PO Box 284  
 Cambridge City, Indiana 47327  
 Phone: 765-478-3173  
 E-mail: [inra@indianalandmarks.org](mailto:inra@indianalandmarks.org)  
 Web: [www.indiananationalroad.org](http://www.indiananationalroad.org)